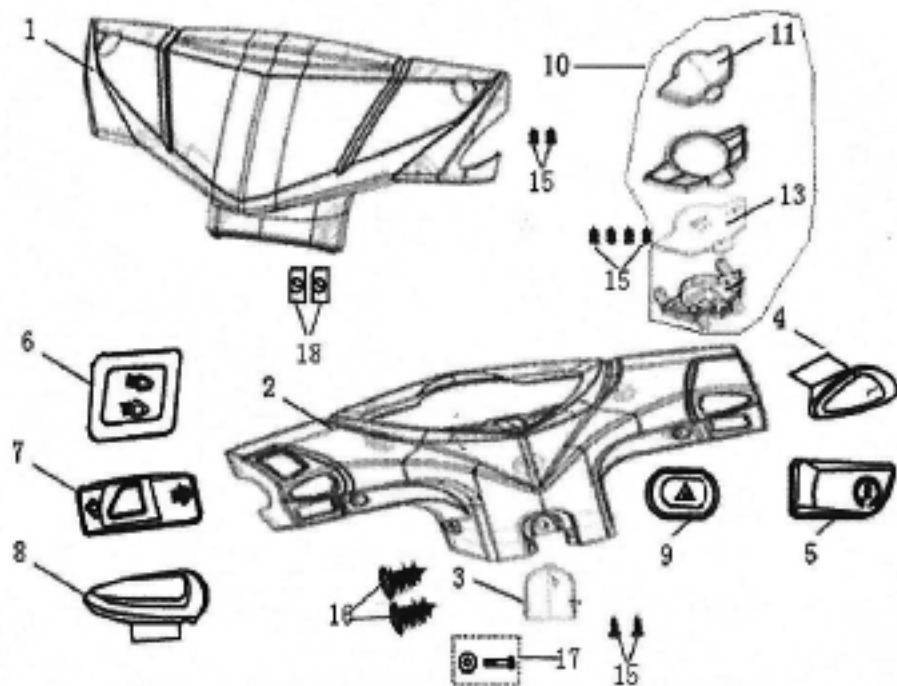


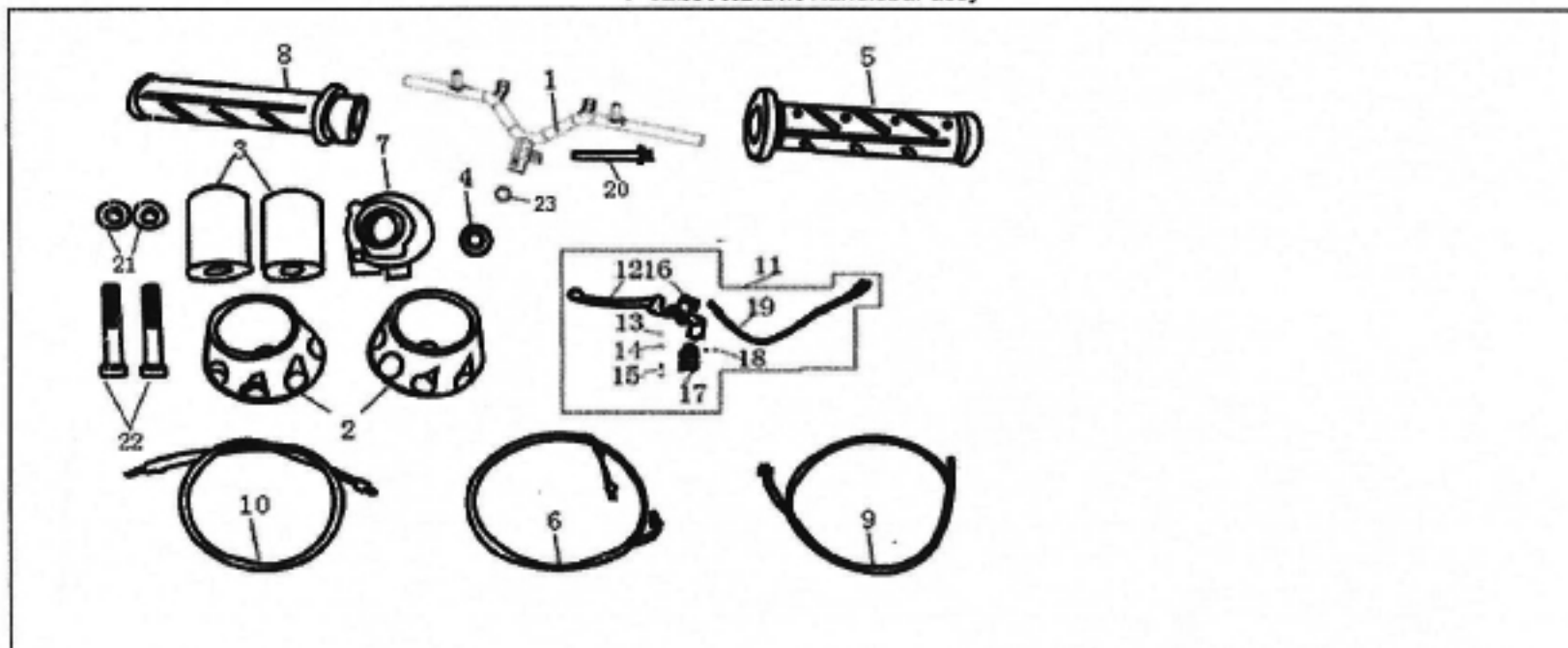
F-01:头罩总成 Hood assy



| No. | Code | En.name | Ch.name | Qty |
|-----|-----------------|------------------------------------|---------|-----|
| 1 | RY150T-8-01-001 | Hood,front part | 头罩前部 | 1 |
| 2 | RY150T-8-01-002 | Hood,rear part <i>Md'bwu wazip</i> | 头罩后部 | 1 |
| 3 | RY150T-8-01-003 | Hood,rear part cover | 头罩后部小盖 | 1 |
| 4 | RY150T-8-01-004 | Headlight switch | 大灯开关 | 1 |
| 5 | RY150T-8-01-005 | Starting switch | 电起动机开关 | 1 |
| 6 | RY150T-8-01-006 | Dimmer switch | 变光开关 | 1 |
| 7 | RY150T-8-01-007 | Turning light switch | 转向灯开关 | 1 |
| 8 | RY150T-8-01-008 | Horn switch | 喇叭开关 | 1 |
| 9 | RY150T-8-01-009 | Warning switch | 警示开关 | 1 |
| 10 | RY150T-8-01-010 | Instrument assy | 仪表总成 | 1 |
| 11 | | Instrument lens | 仪表透镜 | |
| 12 | | Instrument decorative cover | 仪表装饰壳 | |

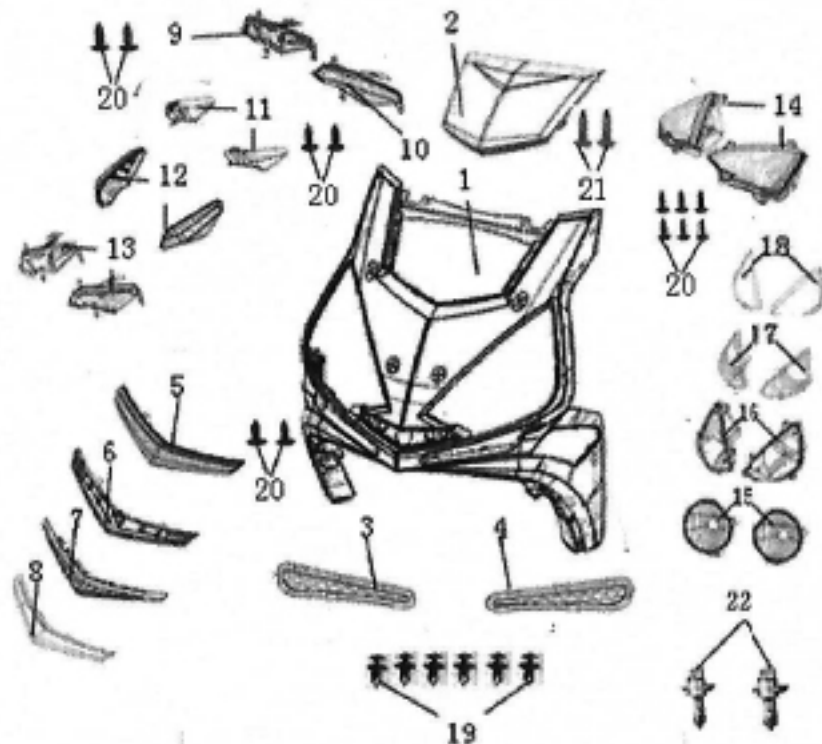
| | | | | |
|----|-----------------|-------------------------|------------------|---|
| 13 | | Instrument panel | 仪表盘板 | |
| 14 | | Instrument pan | 仪表盘壳 | |
| 15 | RY150T-8-01-015 | Tapping screw ST 4.2*12 | 十字槽自攻螺钉ST 4.2×12 | 8 |
| 16 | RY150T-8-01-016 | Tapping screw ST 4.8*12 | 十字槽自攻螺钉ST 4.8×12 | 2 |
| 17 | RY150T-8-01-017 | Bolt,gasket kits | 螺栓和平垫圈组合件 | 1 |
| 18 | RY150T-8-01-018 | Tapping screw clip | 自攻螺钉卡片 | 2 |

F-02:方向把总成 Handlebar assy



| No. | Code | En.name | Ch.name | Qty |
|-----|-----------------|----------------------------------|-----------|-----|
| 1 | RY150T-8-02-001 | Handlebar assy | 方向把焊接组件 | 1 |
| 2 | RY150T-8-02-002 | Handlebar balance block | 方向把平衡块 | 2 |
| 3 | RY150T-8-02-003 | Handlebar balance block sleeve | 方向把平衡块安装套 | 2 |
| 4 | RY150T-8-02-004 | Handlebar spacer | 方向把隔套 | 1 |
| 5 | RY150T-8-02-005 | Grip L. | 左手把套 | 1 |
| 6 | RY150T-8-02-006 | Accelerator cable (油门拉索) | 油门拉索 | 1 |
| 7 | RY150T-8-02-007 | Fixed seat component,accelerator | 油门固定座组件 | 1 |

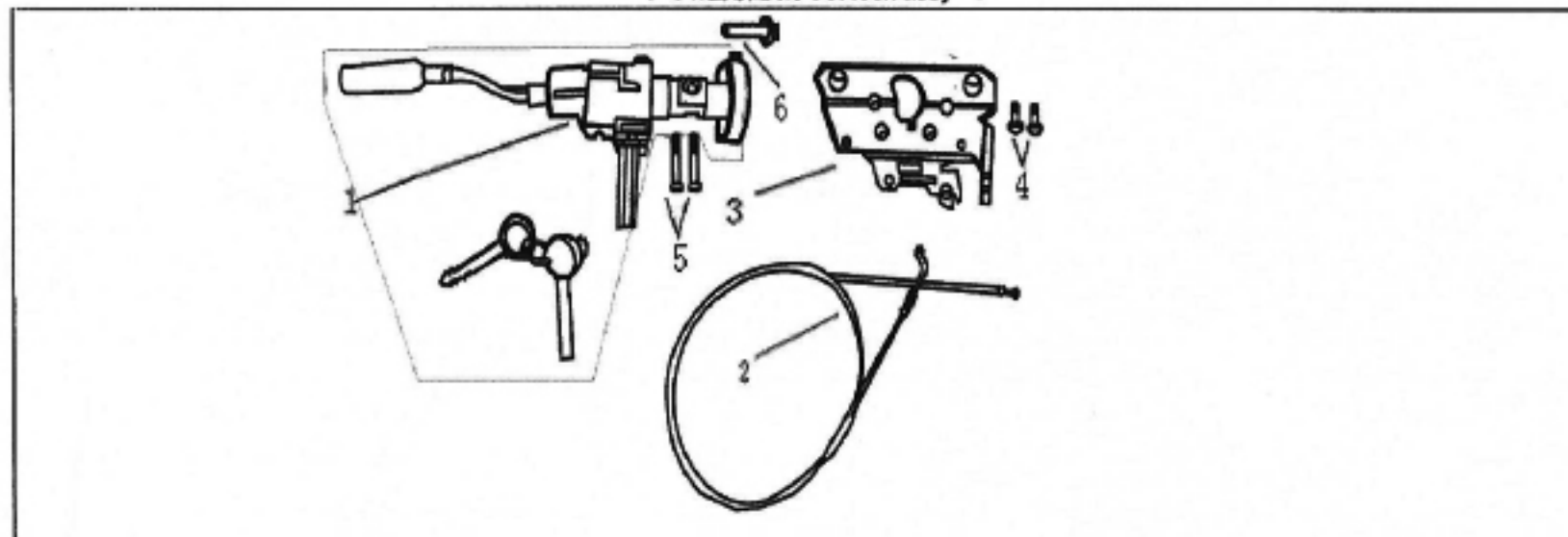
F-03:前大板总成



| No. | Code | En.name | Ch.name | Qty |
|-----|-----------------|------------------------------------|---------|-----|
| 1 | RY150T-8-03-001 | Fr.cover | 前大板 | 1 |
| 2 | RY150T-8-03-002 | Decorative plate,front cover | 前大板装饰板 | 1 |
| 3 | RY150T-8-03-003 | Air plate R,front cover | 前大板右通风板 | 1 |
| 4 | RY150T-8-03-004 | Air plate, L,front cover | 前大板左通风板 | 1 |
| 5 | RY150T-8-03-005 | Fr.position light assy | 前位置灯组件 | 1 |
| 6 | | Fr.position light back shell | 前位置灯底壳 | |
| 7 | | Fr.position light reflective plate | 前位置灯反光碗 | |
| 8 | | Fr.position light cover | 前位置灯灯罩 | |
| 9 | RY150T-8-03-009 | Fr.turning light assy,R | 前右转向灯组件 | 1 |
| 10 | RY150T-8-03-010 | Fr.turning light assy,L | 前左转向灯组件 | 1 |
| 11 | RY150T-8-03-011 | Fr.turning light reflective plate | 前转向灯反光碗 | 2 |

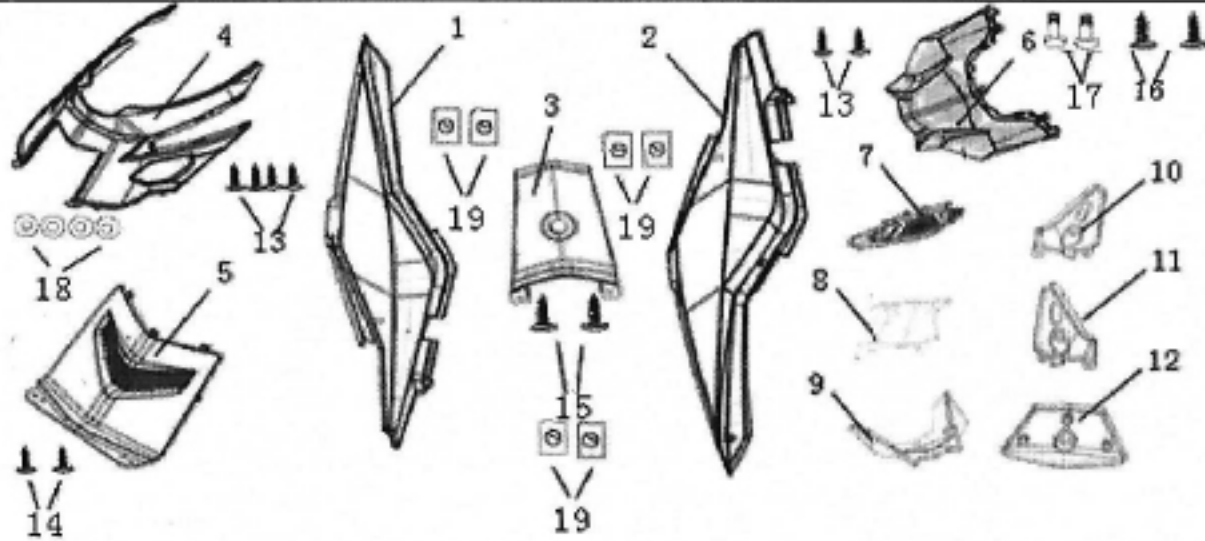
| | | | | |
|----|-----------------|---|-----------------------------|----|
| 12 | RY150T-8-03-012 | Fr.turning light cover | 前转向灯灯罩 | 2 |
| 13 | RY150T-8-03-013 | Fr.turning light back shell | 前转向灯底壳 | 2 |
| 14 | RY150T-8-03-014 | Headlight, R | 右前照灯组件 | 1 |
| 15 | RY150T-8-03-015 | Headlight, L | 左前照灯组件 | 1 |
| 16 | RY150T-8-03-016 | Headlight reflective plate | 前照灯反光碗 | 2 |
| 17 | | Headlight lamp holder | 前照灯灯座 | 2 |
| 18 | | Headlight decorative cover | 前照灯装饰盖 | 2 |
| 19 | | Headlight cover | 前照灯灯罩 | 2 |
| 20 | RY150T-8-03-020 | Expansion screw | 膨胀螺钉 | 6 |
| 21 | RY150T-8-03-021 | Phillips oval head self-drilling screw ST4.2×12 | 十字槽扁圆头自攻螺钉ST4.2×12 | 12 |
| 22 | RY150T-8-03-023 | Bulb (HS1 Type) | 灯泡 (HS1类 三爪) HS1 12V 35/35W | 2 |

F-04:套锁总成 Set lock assy



| No. | Code | En.name | Ch.name | Qty |
|-----|-----------------|----------------------------------|-----------|-----|
| 1. | RY150T-8-04-001 | Set lock assy | 套索总成 | 1 |
| 2. | RY150T-8-04-002 | Seat cable (Vrigo 6EAD5) | 座垫拉索 | 1 |
| 3. | RY150T-8-04-003 | Seat lock holder (Bicm 6814) | 座垫锁座 | 1 |
| 4. | RY150T-8-04-004 | Large oval cross slot head screw | 十字槽大扁圆头螺钉 | 2 |
| 5. | RY150T-8-04-005 | hexagon socket cap screws | 内六角圆柱头螺钉 | 2 |
| 6. | RY150T-8-04-006 | cross recess pan head screw | 十字槽盘头螺钉 | 1 |

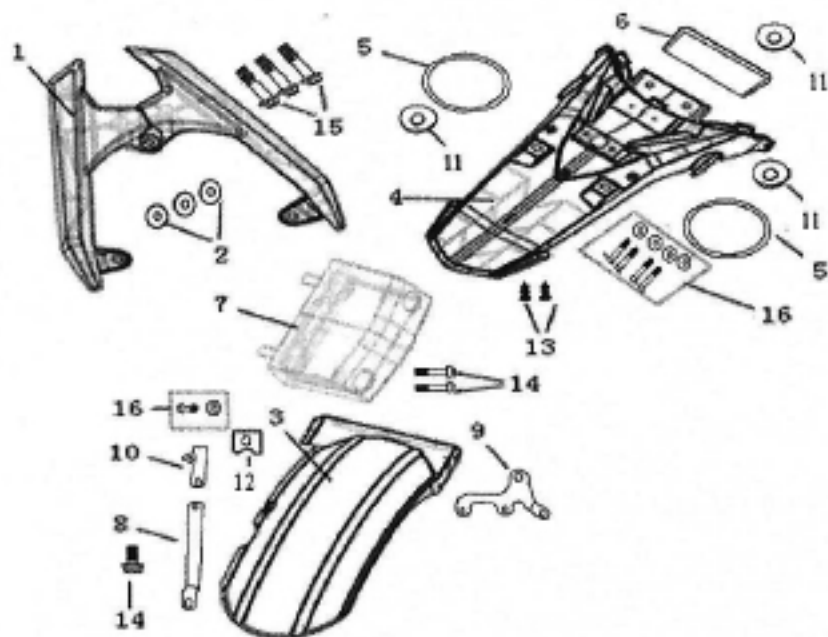
F-05:后尾灯、装饰板及装饰板连接板、中央护罩总成 Tail light,decorative plate,decorative connection plate,center cover assy



| No. | Code | En.name | Ch.name | Qty |
|-----|-----------------|--|--------------------|-----|
| 1 | RY150T-8-05-001 | Decorative plate, R | 右装饰板 | 1 |
| 2 | RY150T-8-05-002 | decorative plate, L | 左装饰板 | 1 |
| 3 | RY150T-8-05-003 | Re.connection,decorative plate | 装饰板后连接板 | 1 |
| 4 | RY150T-8-05-004 | Center cover | 中央护罩 | 1 |
| 5 | RY150T-8-05-005 | Small cover, center cover | 中央护罩小盖 | 1 |
| 6 | RY150T-8-05-006 | Tail light assy | 后尾灯总成 | 1 |
| 7 | | Tail light holder | 后尾灯灯座 | 1 |
| 8 | | Tail light decorative cover | 尾灯装饰罩 | 1 |
| 9 | | Tail light cover | 尾灯灯罩 | 1 |
| 10 | | Re.turning light,L | 后左转向灯灯罩 | 1 |
| 11 | | Re.turning light,R | 后右转向灯灯罩 | 1 |
| 12 | | Tail light outer cover | 后尾灯外罩 | 1 |
| 13 | RY150T-8-05-013 | Philips oval head self-drilling screw ST4.2×12 | 十字槽扁圆头自攻螺钉ST4.2×12 | 6 |
| 14 | RY150T-8-05-014 | Philips oval head self-drilling screw ST4.8×16 | 十字槽扁圆头自攻螺钉ST4.8×16 | 2 |
| 15 | RY150T-8-05-015 | Philips oval head self-drilling screw ST4.8×12 | 十字槽扁圆头自攻螺钉ST4.8×12 | 2 |
| 16 | RY150T-8-05-016 | Philips oval head self-drilling screw ST4.8×16 | 十字槽扁圆头自攻螺钉ST4.8×16 | 2 |

| | | | | |
|----|-----------------|--|-----------------|---|
| 17 | RY150T-8-05-017 | Large oval cross slot head screw M6×16 | 十字槽大扁圆头螺钉 M6×16 | 2 |
| 18 | RY150T-8-05-018 | Flat pad | 大平垫 | 4 |
| 19 | RY150T-8-05-019 | Tapping screw clip | 自攻螺钉卡片 | 6 |

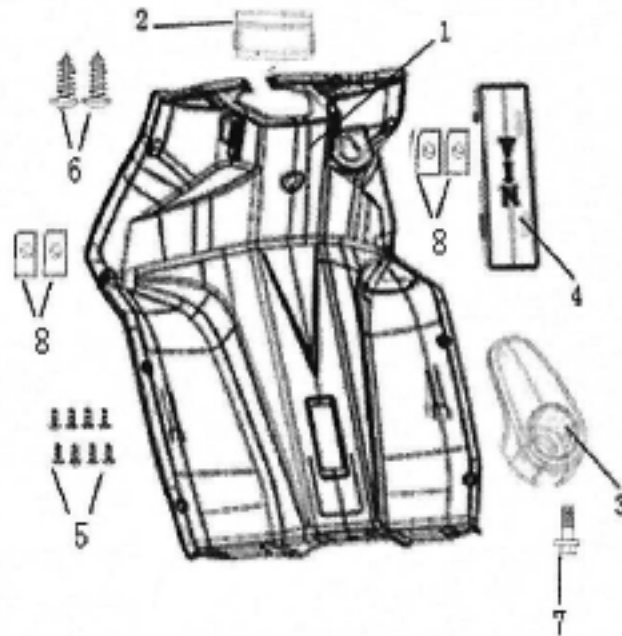
F-06:后尾架及后挡泥板、后轮挡泥板总成 Rear carrier,Rear fender and Rear wheel fender assy



| No. | Code | En.name | Ch.name | Qty |
|-----|-----------------|-----------------------------------|------------|-----|
| 1 | RY150T-8-06-001 | Re.carrier assy | 后货架组件 | 1 |
| 3 | RY150T-8-06-002 | Re.wheel fender | 后轮挡泥板 | 1 |
| 4 | RY150T-8-06-003 | Re.fender | 后挡泥板 | 1 |
| 5 | RY150T-8-06-004 | Side reflector | 侧反射器 | 2 |
| 6 | RY150T-8-06-005 | Rear reflector | 后反射器 | 1 |
| 7 | RY150T-8-06-006 | License light assy | 牌照灯组件 | 1 |
| 8 | RY150T-8-06-007 | Re. Left bracket,Re.wheel fender | 后轮泥板左后安装支架 | 1 |
| 9 | RY150T-8-06-008 | Re. right bracket,Re.wheel fender | 后轮泥板右安装支架 | 1 |
| 10 | RY150T-8-06-009 | Fr.left bracket, Re.wheel fender | 后轮泥板左前安装支架 | 1 |
| 11 | RY150T-8-06-010 | hexagon nut with flange | 六角法兰面螺母 | 5 |

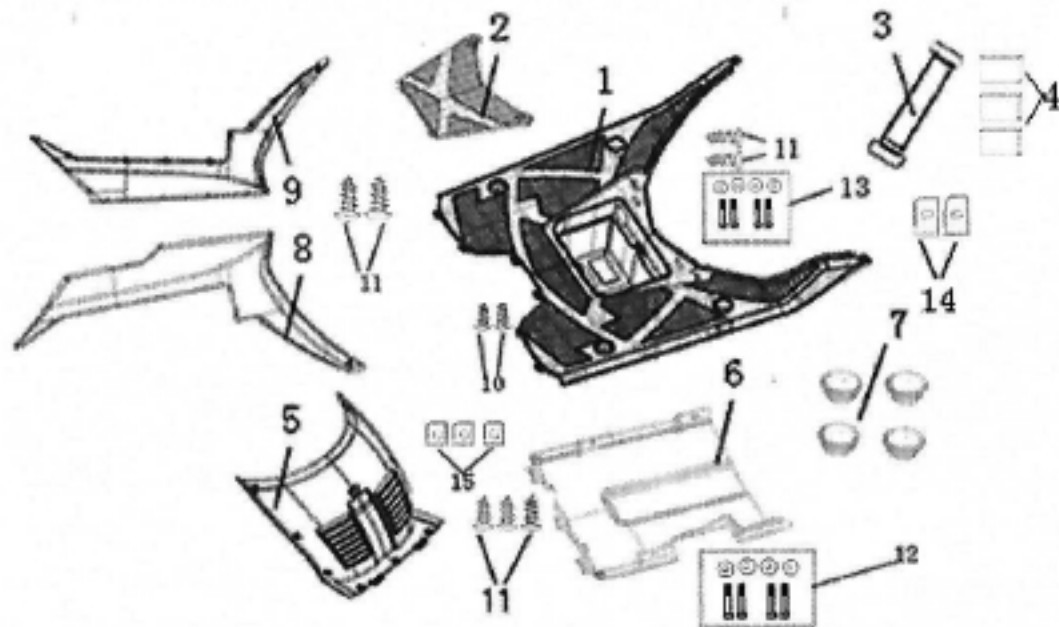
| | | | | |
|----|-----------------|---------------------------------------|------------|---|
| 12 | RY150T-8-06-011 | Nut clip | 螺母卡片 | 1 |
| 13 | RY150T-8-06-012 | Philips oval head self-drilling screw | 十字槽扁圆头自攻螺钉 | 2 |
| 14 | RY150T-8-06-013 | hexagon bolt with flange | 六角法兰面螺栓 | 2 |
| 15 | RY150T-8-06-014 | hexagon bolt with flange | 六角法兰面螺栓 | 3 |
| 16 | RY150T-8-06-015 | Bolt, flat gaskets components | 螺栓和平垫圈组合件 | 5 |

F-07:前置物箱总成 Front storage box assy



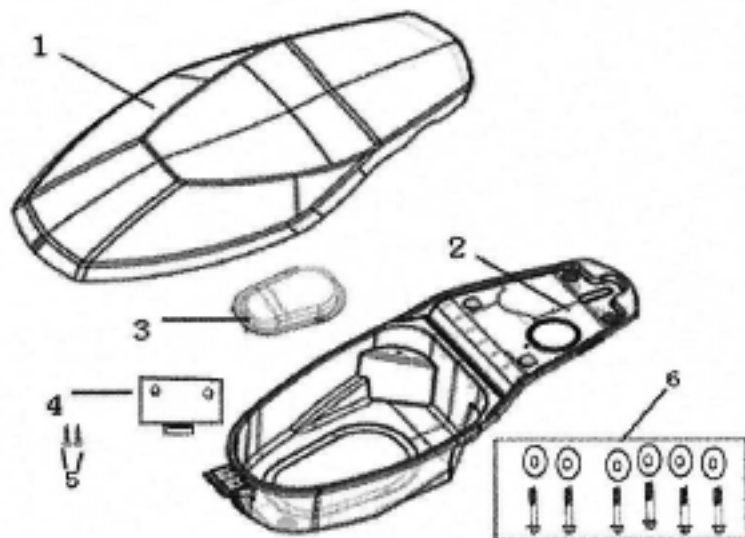
| No. | Code | En.name | Ch.name | Qty |
|-----|-----------------|---------------------------------------|------------|-----|
| 1 | RY150T-8-07-001 | Front storage box | 前置物箱 | 1 |
| 2 | RY150T-8-07-002 | Front storage box connection | 前置物箱连接板 | 1 |
| 3 | RY150T-8-07-003 | Helmet hook | 头盔挂钩 | 1 |
| 4 | RY150T-8-07-004 | Vin No.cover | 车架号码盖 | 1 |
| 5 | RY150T-8-07-005 | Philips oval head self-drilling screw | 十字槽扁圆头自攻螺钉 | 8 |
| 6 | RY150T-8-07-006 | Philips oval head self-drilling screw | 十字槽扁圆头自攻螺钉 | 2 |
| 7 | RY150T-8-07-007 | Hexagon flange bolts | 六角法兰面螺栓 | 1 |
| 8 | RY150T-8-07-008 | Tapping screw clip | 自攻螺钉卡片 | 4 |

F-08:脚踏板、左右边条及车架挡泥板总成 Footrest, side plate L/R and frame fender assy



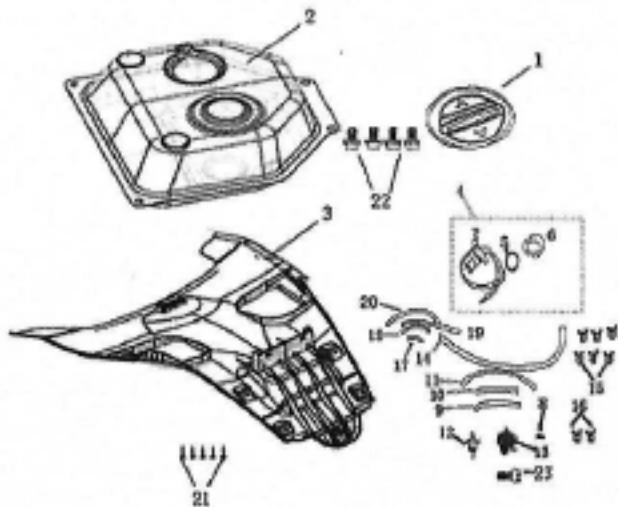
| No. | Code | En.name | Ch.name | Qty |
|-----|-----------------|--------------------------------------|-----------------|-----|
| 1 | RY150T-8-08-001 | Footrest | 脚踏板 | 1 |
| 2 | RY150T-8-08-002 | Battery box cover | 蓄电池盒盖 | 1 |
| 3 | RY150T-8-08-003 | Battery strip | 电瓶压条 | 1 |
| 4 | RY150T-8-08-004 | Battery rubber mat | 电瓶胶垫 | 1 |
| 5 | RY150T-8-08-005 | Inner cover, front fender | 前挡泥板 | 1 |
| 6 | RY150T-8-08-006 | Bottom cover | 车架底板 | 1 |
| 7 | RY150T-8-08-007 | Cover cap, footrest | 脚踏板小盖 | 4 |
| 8 | RY150T-8-08-008 | Front board, L | 前左边条 | 1 |
| 9 | RY150T-8-08-009 | Front board, R | 前右边条 | 1 |
| 10 | RY150T-8-08-010 | Bolt & flat gaskets components M6x16 | 螺栓和平垫圈组合件 M6x16 | 2 |
| 11 | RY150T-8-08-011 | Tapping screw clip | 自攻螺钉卡片 | 7 |
| 12 | RY150T-8-08-012 | Tapping screw clip | 自攻螺钉卡片 | 4 |

F-09:座垫及行李箱总成 Seat & Luggage box assy



| No. | Code | En.name | Ch.name | Qty |
|-----|-----------------|--|------------|-----|
| 1 | RY150T-8-09-001 | Seat assy | 座垫组件 | 1 |
| 2 | RY150T-8-09-002 | Luggage box | 行李箱 | 1 |
| 3 | RY150T-8-09-003 | Luggage box inner cover | 行李箱内盖 | 1 |
| 4 | RY150T-8-09-004 | Seat cushion axis clamp | 座垫转轴压板 | 1 |
| 5 | RY150T-8-09-005 | Phillips oval head self-drilling screw | 十字槽扁圆头自攻螺钉 | 2 |
| 6 | RY150T-8-09-006 | Bolt& flat gaskets components | 螺栓和平垫圈组合件 | 6 |

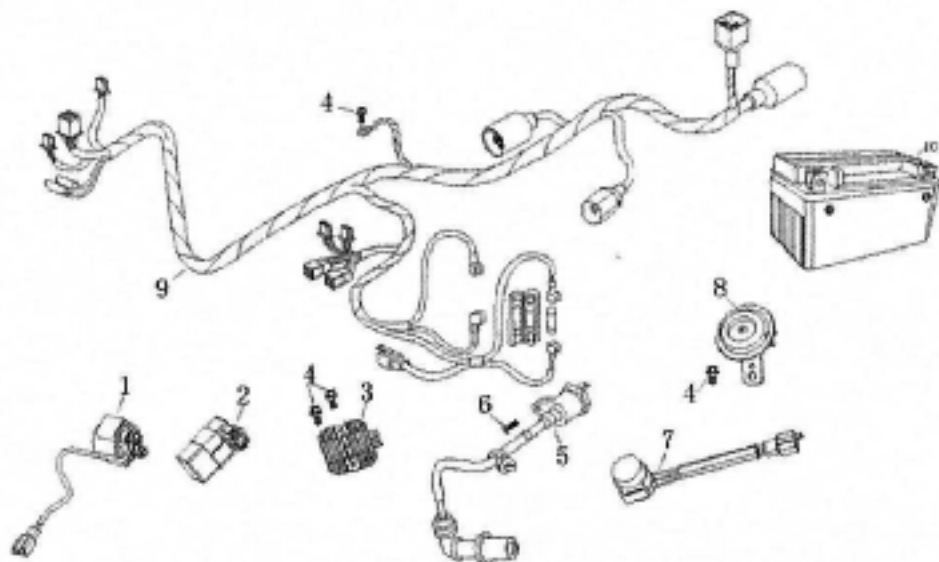
F-10:油箱总成



| No. | Code | En.name | Ch.name | Qty |
|-----|-----------------|--|--------------------|-----|
| 1 | RY150T-8-10-001 | Fuel tank cap | 燃油箱盖 | 1 |
| 2 | RY150T-8-10-002 | Fuel tank assy | 燃油箱焊接组件 | 1 |
| 3 | RY150T-8-10-003 | Inner, rear fender | 后挡泥板内衬 | 1 |
| 4 | RY150T-8-10-004 | Fuel sensor | 燃油传感器 | 1 |
| 5 | RY150T-8-10-005 | Fuel sensor seal ring | 燃油传感器密封圈 | 1 |
| 6 | RY150T-8-10-006 | Fuel sensor lock plate | 燃油传感器压板 | 1 |
| 8 | RY150T-8-10-007 | Hexagon flange bolts M6×16 | 六角法兰面螺栓 M6×16 | 1 |
| 9 | RY150T-8-10-008 | Fuel pipe 4.7×8.5×150 | 燃油管 通用4.7×8.5×150 | 1 |
| 10 | RY150T-8-10-009 | Fuel pipe 4.7×8.5×220 | 燃油管 通用4.7×8.5×220 | 1 |
| 11 | RY150T-8-10-010 | Fuel pipe 4.7×8.5×300 | 燃油管 通用4.7×8.5×300 | 1 |
| 12 | RY150T-8-10-011 | Fuel strainer assy | 燃油过滤器组件 | 1 |
| 13 | RY150T-8-10-012 | Gasoline triangle negative pressure switch | 汽油三角负压开关 | 1 |
| 14 | RY150T-8-10-013 | Negative pressure pipe 3.8×7.6×180 | 负压管 通用3.8×7.6×180 | 1 |
| 15 | RY150T-8-10-014 | Steel wire clamp φ9 | 钢丝卡箍 通用φ9 彩锌 | 6 |
| 16 | RY150T-8-10-015 | Steel wire clamp φ10 | 钢丝卡箍 通用φ10 彩锌 | 2 |
| 21 | RY150T-8-10-016 | Philips oval head self-drilling screw ST4.2×12 | 十字槽扁圆头自攻螺钉ST4.2×12 | 5 |
| 22 | RY150T-8-10-017 | Hexagon flange bolts M6×12 | 六角法兰面螺栓 M6×12 | 4 |

| | | | | |
|----|-----------------|----------------------------|---------------|---|
| 23 | RY150T-8-10-018 | Hexagon flange bolts M6×16 | 六角法兰面螺栓 M6×16 | 1 |
|----|-----------------|----------------------------|---------------|---|

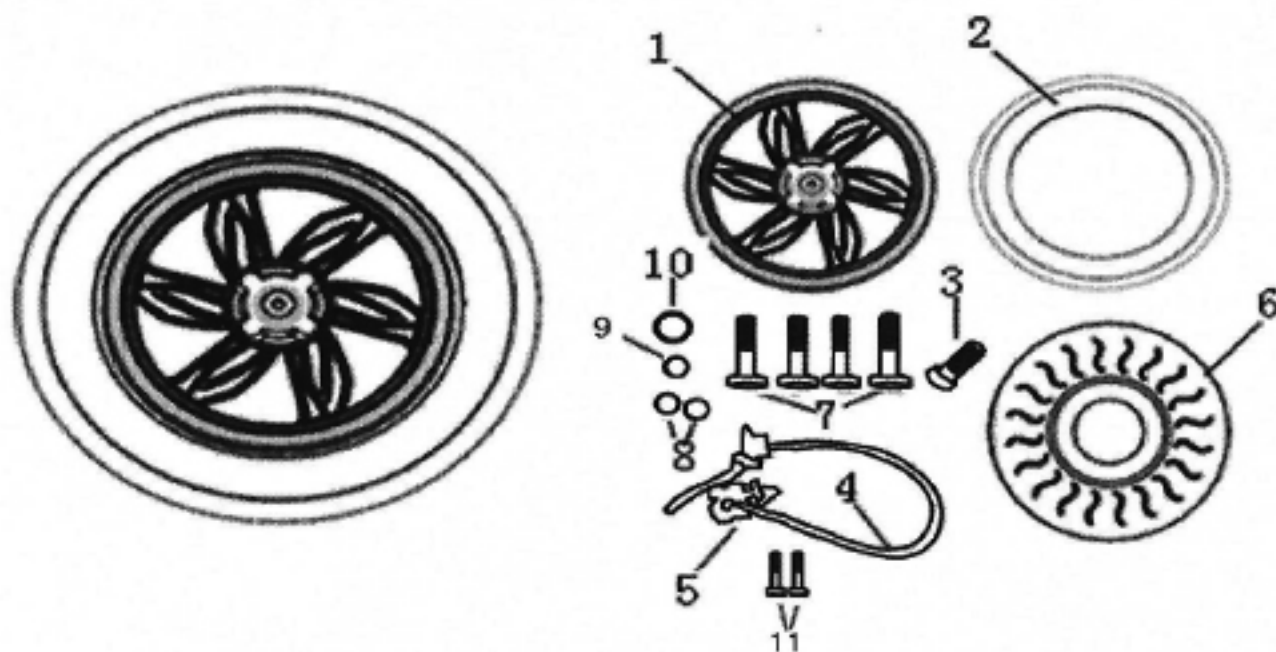
F-11: 电缆及电零件总成 Cable & electric parts assy



| No. | Code | En.name | Ch.name | Qty |
|-----|-----------------|--------------------------------|----------------|-----|
| 1 | RY150T-8-11-001 | Relay | 启动继电器 | 1 |
| 2 | RY150T-8-11-002 | CDI | 点火器 | 1 |
| 3 | RY150T-8-11-003 | Regulator | 整流稳压器 | 1 |
| 4 | RY150T-8-11-004 | Hexagon flange bolts M6x12mm | 六角法兰螺栓 M6x12mm | 4 |
| 5 | RY150T-8-11-005 | High voltage cap&ignition coil | 高压帽与点火线圈 | 1 |
| 6 | RY150T-8-11-006 | Cross pan head bolts M6x25mm | 十字盘头螺栓 M6x25mm | 1 |
| 7 | RY150T-8-11-007 | Flasher | 闪光器 | 1 |
| 8 | RY150T-8-11-008 | Horn | 喇叭 | 1 |
| 9 | RY150T-8-11-009 | Main cable | 主电缆总成 | 1 |
| 10 | RY150T-8-11-010 | Battery assy 12V-7AH , YUSAS | 电池总成12V 7Ah,汤浅 | 1 |

| | | | | |
|----|----------------|--|--|---|
| 13 | RY125-8-12-013 | Brake cable clip | 液压管固定夹 | 1 |
| 14 | RY125-8-12-014 | Instrument cable thimble | 仪表软轴穿线环 | 1 |
| 15 | RY125-8-12-015 | Bush, front wheel $\phi 12 \times \phi 20 \times 20$ | 衬套 前轮衬套 $\phi 12 \times \phi 20 \times 20$ | 1 |
| 16 | RY125-8-12-016 | Front axle M12 \times 1.25 \times 235 | 前轮轴 M12 \times 1.25 \times 235 单绿 | 1 |
| 17 | RY125-8-12-017 | Front wheel fender | 前轮挡泥板 | 1 |
| 18 | RY125-8-12-018 | Hexagon flange bolts M6 \times 12 | 六角法兰面螺栓 M6 \times 12 | 2 |
| 19 | RY125-8-12-019 | Hexagon flange bolts M10 \times 1.25 \times 45 | 六角法兰面螺栓 M10 \times 1.25 \times 45 | 4 |
| 20 | RY125-8-12-020 | Hex flange lock nut M12 \times 1.25 | 六角法兰面锁紧螺母 M12 \times 1.25 | 1 |
| 21 | RY125-8-12-021 | Large oval cross slot head screw M6 \times 16 | 十字槽大扁圆头螺钉 | 4 |

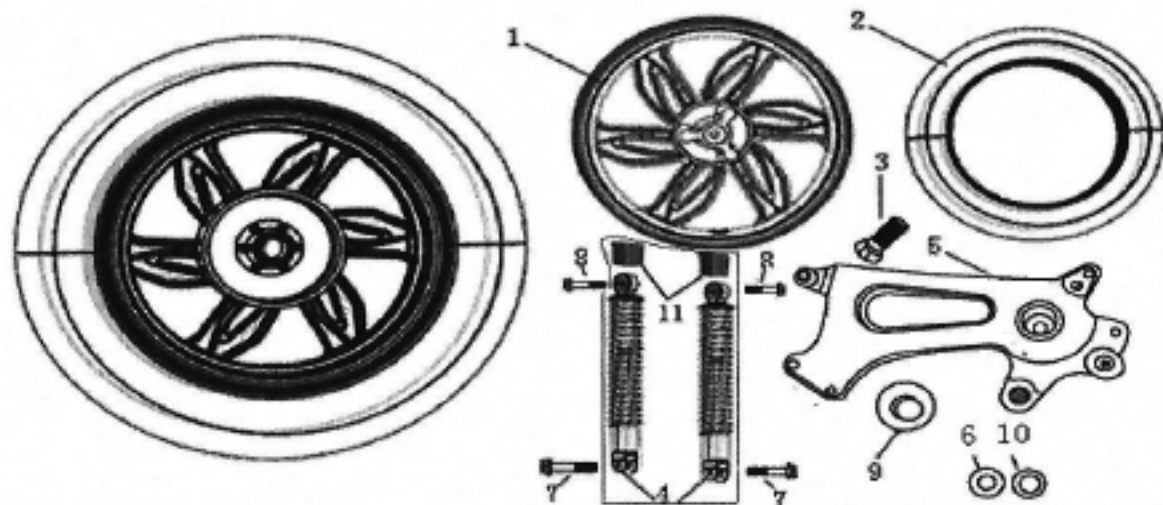
F-13:前轮总成 Front wheel assy



| No. | Code | En.name | Ch.name | Qty |
|-----|-----------------|--------------------------------------|--------------------------|-----|
| 1 | RY150T-8-13-001 | Front alum. Wheel MT2.50 \times 14 | 前轮圈组件 MT2.50 \times 14 | 1 |
| 2 | RY150T-8-13-002 | Front tyre 110/70-14,CST | 轮胎 前110/70-14,正新 | 1 |
| 3 | RY150T-8-13-003 | Cycle valve | 气门嘴 | 1 |

| | | | | |
|----|-----------------|-----------------------------|---------------|---|
| 4 | RY150T-8-13-004 | Fr. Brake cable | 液压油管 | 1 |
| 5 | RY150T-8-13-005 | Fr. brake assy | 前液压制动器总成 | 1 |
| 6 | RY150T-8-13-006 | Fr. Disc | 前碟刹盘 | 1 |
| 7 | RY150T-8-13-007 | Disc bolt | 碟刹盘固定螺栓 | 4 |
| 8 | RY150T-8-13-008 | Bolt head rubber sleeve M12 | 螺栓头橡胶套 M12 | 2 |
| 9 | RY150T-8-13-009 | Bolt head rubber sleeve M14 | 螺栓头橡胶套 M14 | 1 |
| 10 | RY150T-8-13-010 | Nut of rubber M17 | 螺母橡胶套 M17 | 1 |
| 11 | RY150T-8-13-011 | Hexagon flange bolts M8×25 | 六角法兰面螺栓 M8×25 | 2 |

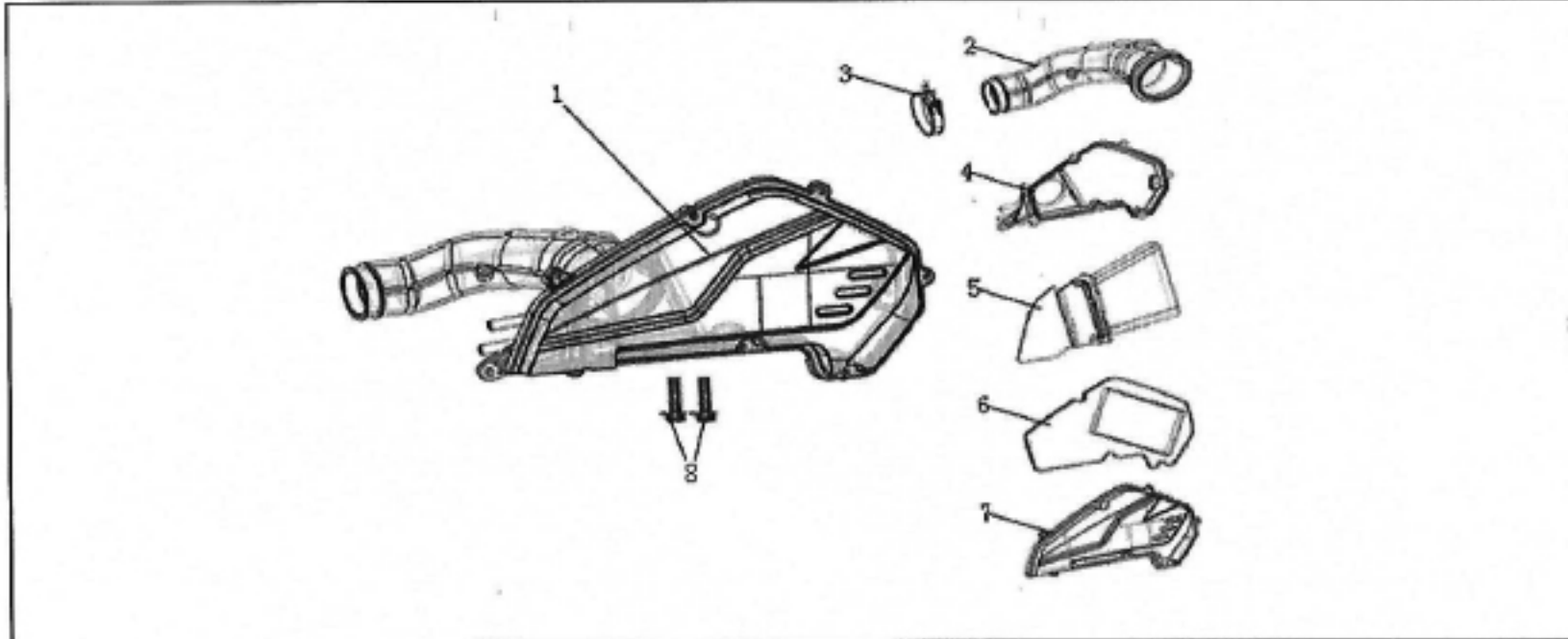
F-14:后轮及后减震总成 Rear wheel & rear cushion assy



| No. | Code | En.name | Ch.name | Qty |
|-----|-----------------|-----------------------------|------------------|-----|
| 1 | RY150T-8-14-001 | Rear alum wheel.MT2.75×14 | 后轮圈组件 MT2.75×14 | 1 |
| 2 | RY150T-8-14-002 | Re. tyre , CST,120/70-14 | 轮胎, 正新 120/70-14 | 1 |
| 3 | RY150T-8-14-003 | Cycle valve | 气门嘴 | 1 |
| 4 | RY150T-8-14-004 | Rear cushion 335mm | 后减震器组件 335mm双减 | 2 |
| 5 | RY150T-8-14-005 | Rear wheel connection plate | 后轮连接板组合 | 1 |
| 6 | RY150T-8-14-006 | Bush φ17.5*φ20*27 | 衬套 φ17.5*φ20*27 | 1 |
| 7 | RY150T-8-14-007 | Hexagon flange bolts M8×32 | 六角法兰面螺栓 M8×32 | 2 |

| | | | | |
|----|-----------------|----------------------------------|---------------------|---|
| 8 | RY150T-8-14-008 | Hexagon flange bolts M10×1.25×40 | 六角法兰面螺栓 M10×1.25×40 | 2 |
| 9 | RY150T-8-14-009 | Hex flange lock nut M16×1.5 | 六角法兰面锁紧螺母 M16×1.5 | 1 |
| 10 | RY150T-8-14-010 | Bush 17.5×25×6 | 衬套 17.5×25×6 | 1 |

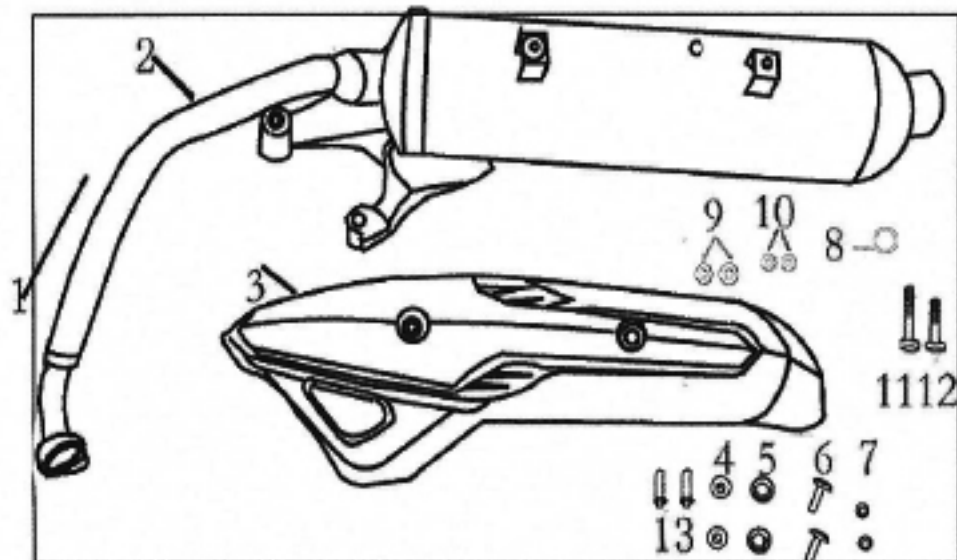
F-15:空气滤清器及散件总成 Air filter components



| No. | Code | En.name | Ch.name | Qty |
|-----|-----------------|-----------------------------|----------------------------|---------------|
| 1 | RY150T-8-15-001 | Air filter assy | 空气滤清器组件 (预康款) | 1 |
| 2 | | Air filter exit pipe | 空气滤清器出气管 | 1 |
| 4 | | Air filter body lower cover | 空气滤清器箱体下盖 | 1 |
| 5 | | Air filter inlet air pipe | 空气滤清器进气管 (吸风管) | 1 |
| 6 | | Air filter element | 空气滤清器滤芯 | 1 |
| 7 | | Air filter body upper cover | 空气滤清器边盖上盖 | 1 |
| 8 | | RY150T-8-15-008 | Hexagon flange bolts M6×25 | 六角法兰面螺栓 M6×25 |
| 3 | RY150T-8-15-003 | Air filter exit pipe clamp | 空气滤清器出气管卡箍 | 1 |
| 6 | RY150T-8-15-006 | Air filter element | 空气滤清器滤芯 | 1 |

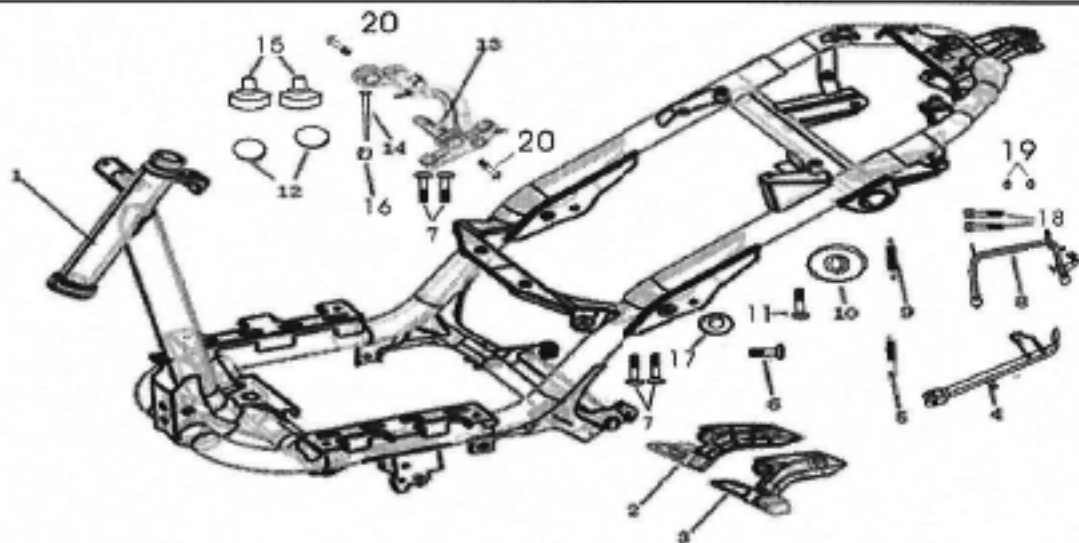
RY150T-8-15-001-A φιαρο αέρος

F-16:消声器总成 Muffler assy



| No. | Code | En.name | Ch.name | Qty |
|-----|-----------------|-----------------------------------|--|-----|
| 1 | RY150T-8-16-001 | Muffler assy | 消声器组合 (ZYA1专用消声器_二次补气_双触媒 欧二排放, 欧三排放, 欧四排放, 欧五排放) | 1 |
| 2 | RY150T-8-16-002 | Muffler body components | 消声器筒体组件, 二次补气_双触媒 欧三排放 | 1 |
| 3 | RY150T-8-16-003 | Muffler cover | 消声器护罩 | 1 |
| 4 | RY150T-8-16-004 | Hexagon flange nut M6 | 六角法兰面螺母 M6 | 2 |
| 5 | RY150T-8-16-005 | Flat gaskets | 平垫圈 | 2 |
| 6 | RY150T-8-16-006 | cross recess pan head screw M6X16 | 十字槽盘头螺钉 M6×16 | 2 |
| 7 | RY150T-8-16-007 | Flat gaskets | 平垫圈 | 2 |
| 8 | RY150T-8-16-008 | Muffler gaskets | 消声器垫圈 | 1 |
| 9 | RY150T-8-16-009 | Flat gaskets φ8 | 平垫圈 φ8 | 2 |
| 10 | RY150T-8-16-010 | Spring gaskets φ8 | 弹垫 φ8 | 2 |
| 11 | RY150T-8-16-011 | Hexagon flange bolts M8×100 | 六角法兰面螺栓 M8×100 | 1 |
| 12 | RY150T-8-16-012 | Hexagon flange bolts M8×70 | 六角法兰面螺栓 M8×70 | 1 |
| 13 | RY150T-8-16-013 | Cap nut M8×32 | 盖形螺母 M8×32 | 2 |

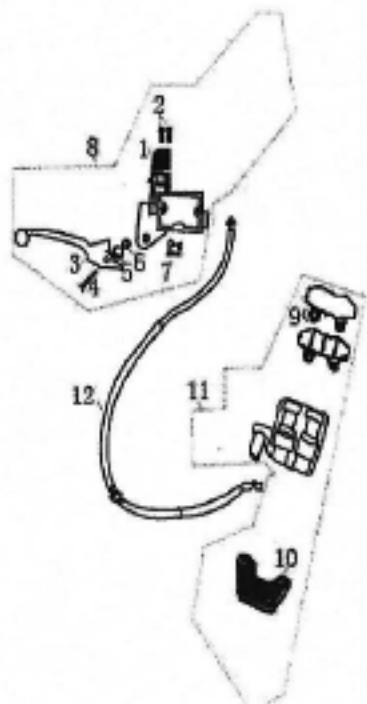
F-17:车架部分及车架散件总成



| No. | Code | En.name | C1.name | Qty |
|-----|-----------------|--|----------------------------------|-----|
| 1 | RY150T-8-17-001 | Frame assy | 车架焊接组件 | 1 |
| 2 | RY150T-8-17-002 | Left Pedal | 左脚蹬组件 | 1 |
| 3 | RY150T-8-17-003 | Right Pedal | 右脚蹬组件 | 1 |
| 4 | RY150T-8-17-004 | Side stand | 边撑焊接组件 | 1 |
| 5 | RY150T-8-17-005 | Side stand Spring(95mm)&rubber cover(50mm) | 边撑弹簧及橡胶套 (主撑长度95mm 橡胶套长度50mm) | 1 |
| 6 | RY150T-8-17-006 | Side stand bolt M10×1.25×25 | 边撑安装螺栓 M10×1.25×25轴位长12.5 | 1 |
| 7 | RY150T-8-17-007 | Bolt M8×20 | 六角法兰面螺栓M8×20 | 4 |
| 8 | RY150T-8-17-008 | Main stand 225mm | 主撑焊接组件 225mm | 1 |
| 9 | RY150T-8-17-009 | Main stand spring (85mm) &rubber cover | 主撑弹簧 | 1 |
| 10 | RY150T-8-17-010 | Main stand bumper block | 主撑缓冲块 通用 | 1 |
| 11 | RY150T-8-17-011 | Hexagon flange bolts M6×25 | 六角法兰面螺栓 M6×25 | 2 |
| 12 | RY150T-8-17-012 | Hanger rubber bolck | 吊架橡胶堵头 | 2 |
| 13 | RY150T-8-17-013 | Hanger assy | 吊架焊接组件 | 1 |
| 14 | RY150T-8-17-014 | Hanger axle M10×1.25×185 | 吊架轴 M10×1.25×185 | 1 |
| 15 | RY150T-8-17-015 | Hang buffer rubber | 吊挂缓冲胶 | 2 |
| 16 | RY150T-8-17-016 | Hexagon flange nuts M10×1.25×25 | 六角法兰面锁紧螺母 M10×1.25 | 1 |

| | | | | |
|----|-----------------|--|--|---|
| 17 | RY150T-8-17-017 | Bush $\phi 10.5 \times \phi 18 \times 5.7$ | 衬套 $\phi 10.5 \times \phi 18 \times 5.7$ | 1 |
| 18 | RY150T-8-17-018 | Hexagon flange bolts M10 \times 1.25 \times 55 | 六角法兰面螺栓 M10 \times 25 | 2 |
| 19 | RY150T-8-17-019 | Bush,main stand | 双撑安装衬套 | 2 |
| 20 | RY150T-8-17-020 | Bolt M10 \times 1.25 \times 55 | 六角法兰面螺栓 M10 \times 1.25 \times 55 | 2 |

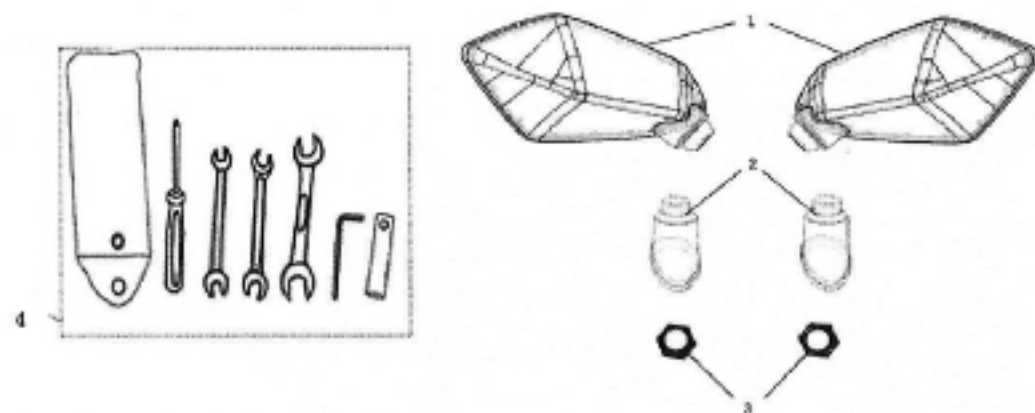
F-18:前液压制动器散件总成 Front disc brake assy



| No. | Code | En.name | Ch.name | Qty |
|-----|-----------------|-------------------------------------|------------------------|-----|
| 2 | RY150T-8-18-002 | Hexagon flange bolts M6 \times 20 | 六角法兰面螺栓 M6 \times 20 | 2 |
| 3 | RY150T-8-18-003 | Fr.brake lever | 前制动手柄 | 1 |
| 4 | RY150T-8-18-004 | Fr.brake lever bolt | 制动手柄安装螺栓 | 1 |
| 6 | RY150T-8-18-006 | Hex flange lock nut M6 | 六角法兰面锁紧螺母 M6 | 1 |
| 7 | RY150T-8-18-007 | Brake switch | 制动开关 | 1 |
| 8 | RY150T-8-18-008 | Fr.disc brake upper pump | 前碟刹上泵 | 1 |
| 1 | | Fr. Disc upper pump fixed plate | 碟刹上泵固定板 | 1 |

| | | | | |
|----|-----------------|-------------------------------|--------|---|
| 5 | | Spring gaskets M6 | 彈墊 M6 | 1 |
| 9 | RY150T-8-18-009 | Fr.pad set | 摩擦蹄片 | 2 |
| 10 | RY150T-8-18-010 | Disc brake lower pump bracket | 下泵安裝支架 | 1 |
| 11 | RY150T-8-18-011 | Disc brake lower pump | 碟刹下泵 | 1 |
| 12 | RY150T-8-18-012 | Front brake cable | 前液壓油管 | 1 |

F-19: 隨車工具總成 Tool set assy



| No. | Code | En.name | Ch.name | Qty |
|-----|-----------------|--------------------------------|---------------------|-----|
| 1 | RY150T-8-19-002 | Rear view mirror | 后視鏡組件, QY1108 | 2 |
| 2 | RY150T-8-19-003 | Rear view mirror rubber sleeve | 后視鏡膠套 | 2 |
| 3 | RY150T-8-19-004 | Rear view mirror nut | 后視鏡螺母 | 2 |
| 4 | RY150T-8-19-001 | Tool sets | 隨車工具組合 (6件套_內六角規格6) | 1 |